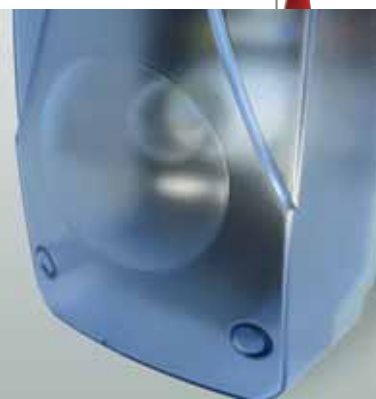




**DEA**<sup>®</sup>



SECTIONAL



# LATO

Automation for sectional and sliding doors



Electromechanical operator for sectional and sliding industrial doors

# LATO

FOR GREAT PERFORMANCES

LATO a little operator with **great performances**, created for the automation of sectional and sliding industrial doors, **permits easy and fast installations** thanks to the **built in control panel**.

Compact and with an agreeable aesthetic, it's provided of a **courtesy light** too.



## RANGE LATO

### 230V a.c.

**LATO 220RR:** operator with built-in 202RR control board, anticrushing safety device, integrated 433 Mhz radio receiver, speed adjustment during normal cycle and slow down in opening and closing, motor control by encoder, release by cable, limit switches.

**LATO 220:** operator without control panel, with manual unlocking device, limit switches.

**LATO 220EN:** operator without control panel, with manual unlocking device, magnetic encoder and 6 mt. long cable, limit switches (to be used with external control panel art. 203RR/C).

**LATO 220C:** operator without control panel, with chain-driven manual emergency manoeuvre, limit switches.

**LATO 220CEN:** operator without control panel, with chain-driven manual emergency manoeuvre, magnetic encoder and 6 mt. long cable, limit switches (to be used with external control panel art. 203RR/C).

### 400V a.c.

**LATO 400:** operator without control panel with manual unlocking device, limit switches.

**LATO 400C:** operator without control panel with chain-driven manual emergency manoeuvre, limit switches.

**LATO 400CEN:** operator without control panel, with chain-driven manual emergency manoeuvre, magnetic encoder and 6 mt. long cable, limit switches (to be used with external control panel art. 400RR/C).

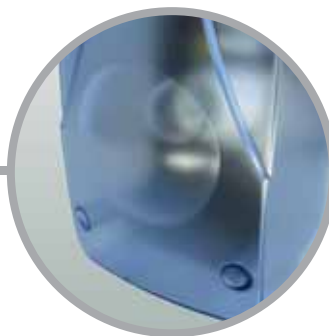
*DEA System control boards are planned to optimize the performances of LATO range.*

*All functions are adjusted by 3 buttons and a digital display.*

*It is suggested to use control boards with electronic force adjustment art. 203RR (230V ac) and with the anti-inertia breaking device art. 400RR (400V)*

### The models

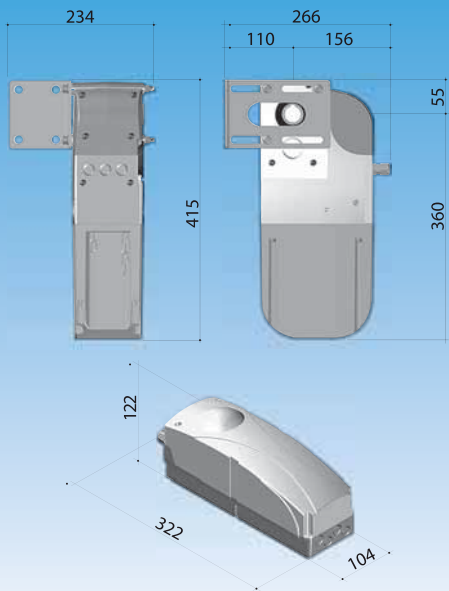
- 230V a.c. and 400V a.c. electromechanical automation
- Built in condenser (mod. 230V)
- Opening and closing limit switches
- Simple and sure external release by cable
- Courtesy light
- On board control panel (mod. 220RR)



COURTESY LIGHT



ON BOARD CONTROL PANEL!



## accessories



**800C/TEN**  
Chain tightener



**800C/F**  
Chain anchoring brackets



**800C/CZ38**  
Key+  
Pinion 1/2" Z=38



**LI9**  
Key+  
Pinion 1/2" Z=19



**800C/ACC**  
Joint, chain



**LAC19**  
Pinion 1/2"  
Z=19+  
Extension shaft



**LBA40**  
Socket for cable  
coiler shaft Ø=40



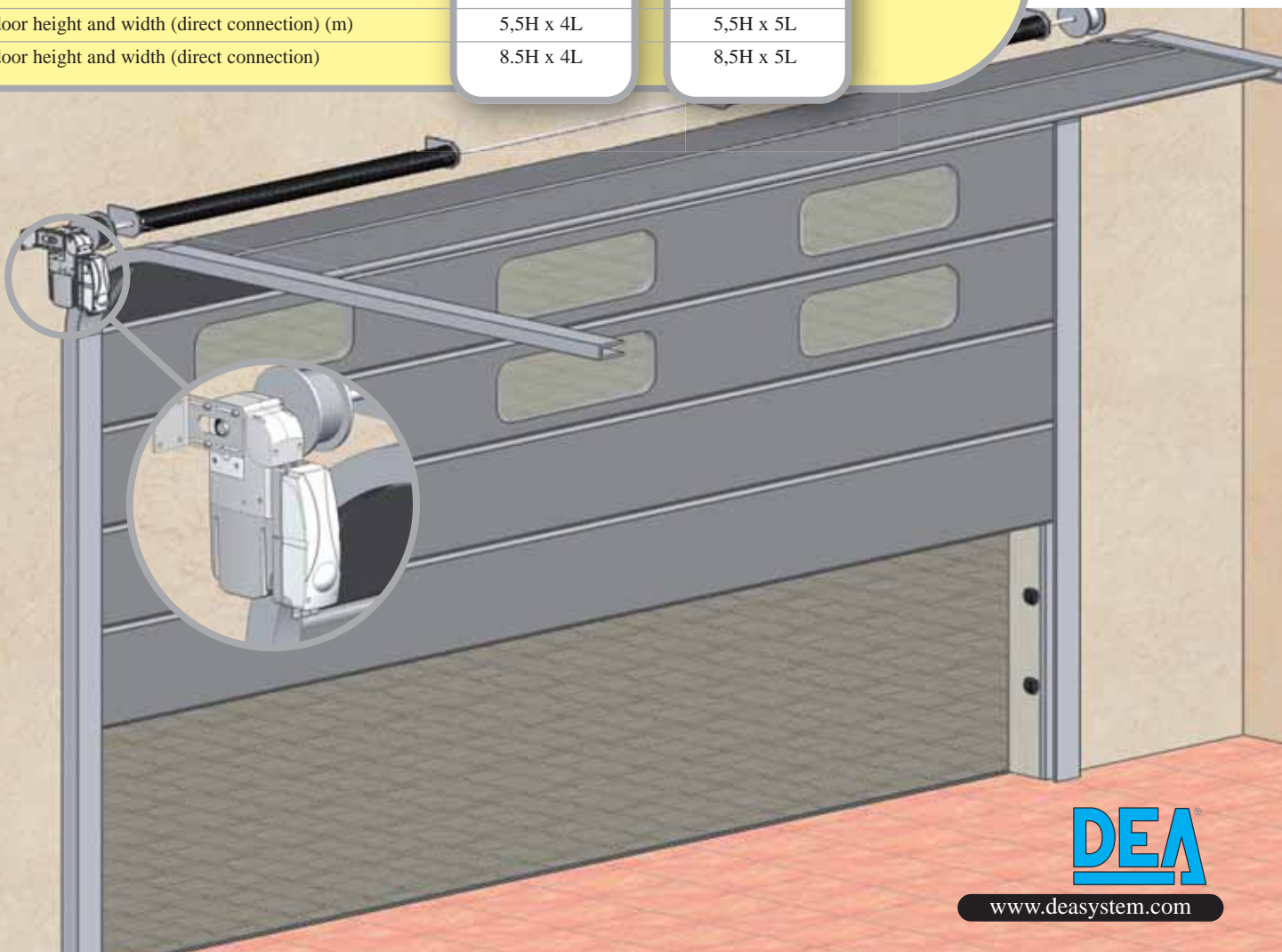
**LBA25**  
Socket for cable  
coiler shaft  
Ø=25,4



**LE**  
Fixing plate

## Technical information

Model	220 - 220C - 220RR	400 - 400C
Motor power supply (V)	230	400
Capacity (W)	500	900
Built in condenser	18	-
Duty cycle	15s-1s-15s x 8 times 30 min PAUSE	15s-1s-15s x 8 times 20 min PAUSE
Max thrust (Nm)	62	104
Exiting shaft speed (rpm)	22,4	22,4
Product weight with packaging (Kg)	12	12
Operating temperature (°C)	-20÷40	-20÷40
Protection level	IP44	IP44
Maximum door height and width (direct connection) (m)	5,5H x 4L	5,5H x 5L
Maximum door height and width (direct connection)	8.5H x 4L	8,5H x 5L



Sectional and garage doors

LIVI 902



SPAZIO



LIVI 800 C



LATO



LIVI 550PL



Swing gates

LIVI 500



ANGOLO



GHOST 200



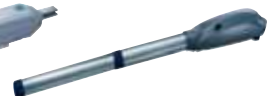
OLI 600



WING 302



LOOK



Sliding gates

LIVI 400



GULLIVER



Electromechanical barriers

PASS



STOP



Roller shutter

WILL



the products

the accessories



**Digikey:**  
Safe and reliable,  
available wireless  
and hard-wired.



**Safety beams:**  
reliable and easy  
to install.



**Control boards:**  
230V a.c. e 24V d.c.,  
exact and simple  
programming.



**Flashing light**  
with built-in  
433,92 Mhz  
aerial.



**Radio devices:**  
frequency 433,92 Mhz,  
available Dip-Switch  
or Self-Learning type.



**Programming keyboard** for  
transponder and wireless  
transmission systems; it allows  
you to personalize installations  
with fitter/installation codes.

DEALER STAMP



**DEA SYSTEM S.p.A.**

GATE AUTOMATION

Via della Tecnica, 6 - 36013 PIOVENE ROCCHETTE (VI)

Telefono: + 39 0445 0445 550789 - Telefax: + 39 0445 550265

www.deasystem.com

deasystem@deasystem.com